



2006년 신기술 실용화 정부포상

Vibration and Temperature Data Collector & Analyzer

Measurement: Vibration, Temperature, RPM, Noise



Real-Time FFT & Spectrogram

FFT Based Octave Analyzer & RPM Meter

Digital Filter Based Octave Analyzer

Sound & Vibration Level Meter

Temperature Display Function

0.5Hz ~ 16kHz Bandwidth

www.svdigital.com

www.digitalsv.com

www.svemall.com

(CMS Shopping Mall)

RealWave Pocket Analyzer



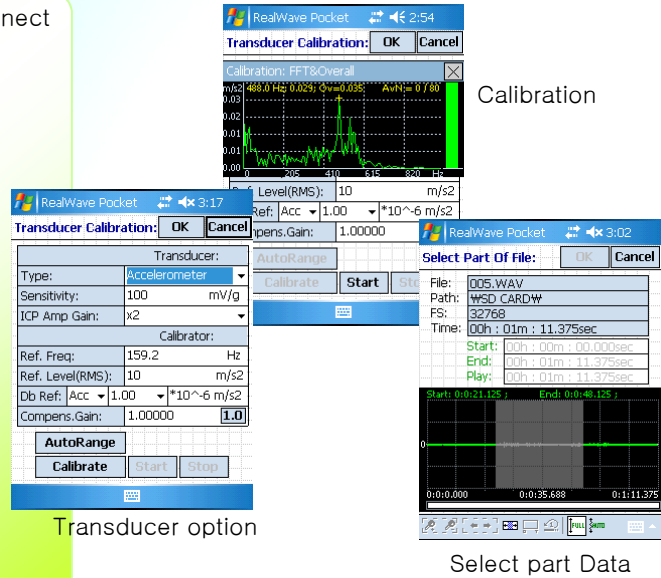
SV Corporation

RealWave Pocket Analyzer

The data acquisition card using CF Card Type II type is inserted to the CF memory slot of PDA to analyze Real Time FFT, Spectrogram, Digital Filter Based Octave Analyzer, RPM Meter, VLM, SLM, Temperature meter Display as a portable data collector and analyzer.

Basic Function

- IEPE Type Mic, DC input, or Accelerometer direct connect
- Real Wave File save and replay more than 1 hour
- Sensitivity Calibration
- Measurement title & machine name store
- Measurement configuration and file save & recall
- FFT, octave, data save and comparison
- Select part function(file select area extension)
- Data part area select, replay, and analysis
- Input signal gain: 1, 2, 4, 8, 16, 32, 64 times
- Overload Detector
- Scale select : Linear, Log, dB
- Data Output : – jpeg, bmp
 - text, excel, matlab



Vibration Level Meter

Sampling Frequency: 32768Hz, 4096Hz, 1024Hz, 512Hz, 256Hz

- Filter: – Emulation Filter 5.8~2 kHz and 23~10 kHz,
 – High-pass Filter with 1Hz, 5Hz, 10Hz and 100~15 kHz cutoff,
 – Band-pass Filter with 0.5~200Hz, 1~1 kHz, 10~500Hz and 10~1 kHz
 – Band-limit Filter with 1.6 kHz, 200 Hz, 100 Hz,
 – Whole-body combined filter (ISO6954, ISO8041)

- 3 Detectors: Acceleration, Velocity, Displacement
 Integration time & time constant control
 Unit : • Acc. : m/s², cm/s², mm/s², um/s², g, dB
 • Vel. : m/s, cm/s, mm/s, um/s, dB
 • Disp. : m, cm, mm, um, dB

RMS, Peak, Peak-to-Peak, Min, Max value

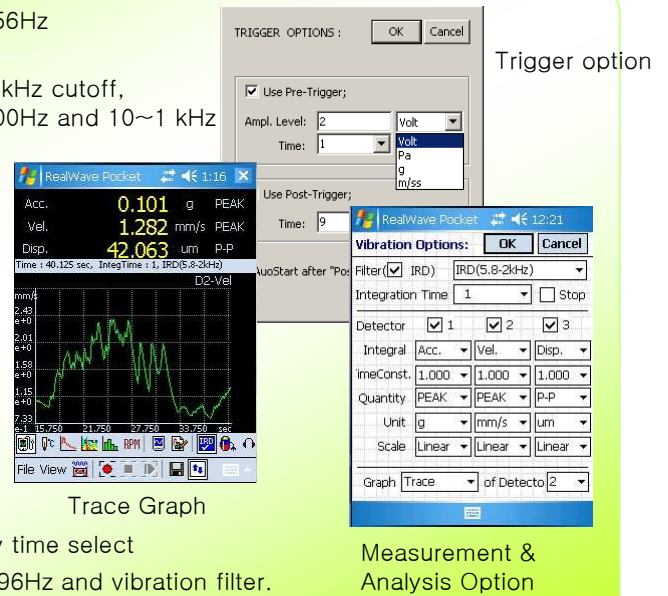
Integration time control

Trigger setup, Auto Scale

Measured data and wave file save & replay in real time

Time constant : 35ms(I), 0.125sec(F), 1sec(S) and arbitrary time select

FFT or Octave analysis works at the same time in below 4096Hz and vibration filter.

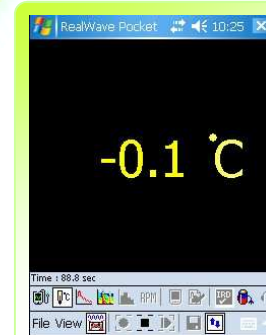


Vibration Filter Mode



- Vibration Level Meter Filter Support .
- FFT data output
- ERP or Data Base interface support with Client Software

Temperature Display



–Temperature value display & measurement from the infrared Temperature meter.

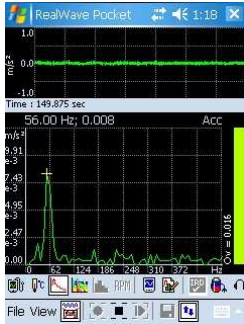
–Temperature save

Handheld Infrared Thermometer →

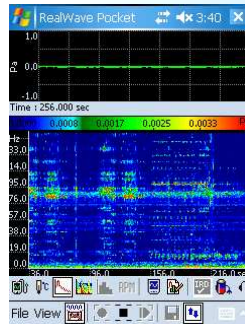


RealWave Pocket Analyzer

FFT, Spectrogram, Octave Analyzer

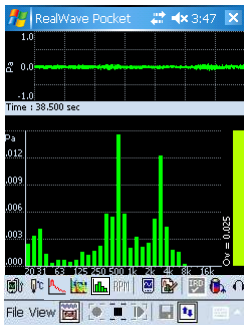


Time Signal
FFT Graph



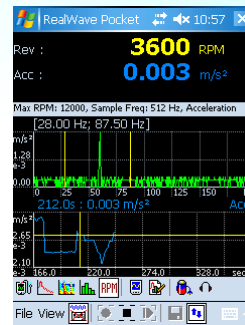
Time Signal
Spectrogram

Sampling Frequency : 256Hz ~ 32768Hz(Selectable)
 Buffer Size : 256, 512, 1024, 2048, 4096(Selectable)
 Max. 1600 Lines
 Window : Rectangular, Hanning, Flattop
 Average : Linear, Peak, Exponential
 Weight : A, B, C, D, E
 Acceleration, Velocity, Displacement Spectrum
 Nth Octaves: 1/1, 1/3, 1/6 Octave
 Auto peak-detecting and auto y-axis scaling
 in the spectrum
 FFT data save up to Max 10 sec

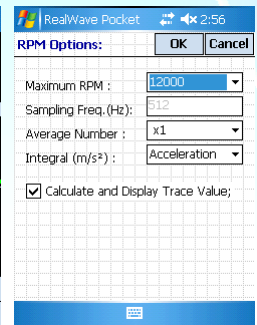


Time Signal
and Octave

- RPM calculation at the first order peak in FFT data of the signal from Accelerometer and Microphone
- Max RPM display : 96000RPM
- 4096 Buffer Size, Hanning Window, Exponential Average
- Picket Fence Error is compensated for RPM Calculation
- Velocity and Displacement Spectra
- Calculate and Display Trace Value

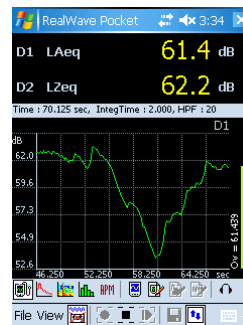


FFT Based RPM Meter

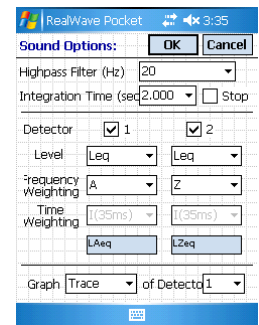


Sound Level Meter

- Sampling Frequency:
- 32768Hz, 4096Hz, 1024Hz, 512Hz, 256Hz
- Filter :
- High-pass Filter(1Hz, 20Hz cutoff)
- Simultaneously 2 detectors and Trace Graph display
- Leq, Lp, Lmax, Lmin, Lpk measurement
 - Weight Filter : Z, A, B, C
- Time Constant : I(35ms), F(125ms), S(1s)
- Leq, Lp, Lmax, Lmin, Lpk value
- Integration time control



Trace Graph



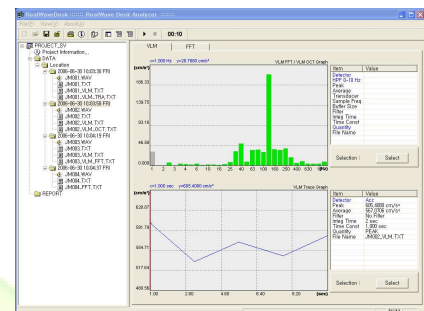
Option setup

Audio file Replay

- Wave file save
- Real Time FFT • Spectrogram • FFT Based
- Octave Analyzer • Filter Based Octave
- Audio file replay of Analyzer • VLM • SLM mode in real time

RealWave Desktop Program

- VLM Trace, SLM Trace, FFT, Octave Data Graph, Text Data display
- PC Base Audio file replay
- Data management & reporting function



PC program display

RealWave Pocket Analyzer

Basic System Configuration

PDA HP iPAQ hx2700, hx2400, Socket SoMo 650
RealWave Analyzer Hardware (CF Card Type II)
Microsoft ActiveSync, Firmware Upgrade Program
RealWave Pocket Analyzer Software
USB Sync Cable
2GB SD Card
Manual
Alumium Carrying Case(370mmX270mmX80mm)

Specification

1. RealWave Pocket Analyzer hardware (Front-end)

Input Channel : 1 AC input or 1 DC input

Transducer Type :

IEPE Type, AC Voltage Type

Sampling Frequency (MAX) : 32768Hz

Input Voltage Range : $\pm 5V(\text{peak})$

Dynamic Range

SLM : 20 ~ 134dB(50mV/Pa x 10Gain)

VLM : 45 ~ 160dB(50mV/g x 10Gain)

Digital Gain : 2x, 4x, 8x, 16x, 32x, 64x

ADC SNR : 100dB more

Freq. Range : 0.5 Hz ~ 16 kHz (3dB)

Interface : CF Card Type II

Dimension(WxHxD) : 43 X 58 X 5(14) mm

Data Save

Wave File : 1 hour

VLM. SLM Data File : 64 days(4Gb)

2. RealWave Pocket Analyzer Software (Option)

Vibration & Sound level meter

Real-Time FFT

Real-Time Spectrogram

FFT Based Octave Analyzer

Digital Filter Based Octave Analyzer

Wave file recording

Overload Detector

Linear, Log, dB scale selectable

Image : JPEG, BMP Text : TEXT, EXCEL, Matlab

Hardware Option

Accelerometer, Mounting magnet and cable
Microphone and cable
Extended Battery
Headphone
Dust and Water proof case
Infrared Temperature Meter

System Diagram



Vibration Data Collector and analyzer for machine diagnosis

Sound & Vibration



SV Corp.

#302, 719-1, Yi-dong, Ansan, Kyengki-do, 426-857, Korea

TEL : +82-31- 501-4030 FAX : +82-31-501-4032

<http://www.svdigital.com>, www.svsmall.com